



PROFESSIONAL  
MEASURING  
WHEELS AND  
COUNTERS  
MANUFACTURER

# FEATURES



1. Gear transmission structure with chain.



2. With safety buckle design, won't loose easily.



3. Large- sighted digital display. (size 7mm\*4.5mm)



4. The rechargeable LED light can be used 36 straight hours. Enable to use during night time.



5. Wearproof TPR tire, not easy to dissolve.



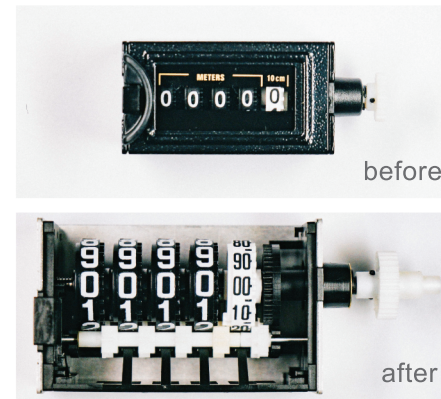
1



2



5



3



4

Certificate for CE , RoHS , SGS

## BWM08 / BWM08N

colour:



# 08

PROFESSIONAL

**Measuring Capacity: 9999.9m or 9999.9ft**

**Minimum: 1 inch or 10cm**

**wheel Diameter: 8" (208mm)**

**Radius: 4" (104mm)**

**Expanded Size: 39" (990mm)**

**Storage Size: 19" (480mm)**

**BWM08 Weight: 1310g**

**BWM08N Weight: 1270g**

The BWM08/08N is perfect for someone who wants something in between. Both are built with care and include TPR pistol grip on the handle, smooth wheels, gear driven counters, and heavy duty quality for long-term durability.



BWM08



BWM08N

Single color

Dual color

## BWM08-LED / BWM08N-LED

colour:



# LED

**Working Voltage: 2.5V**  
**Rechargeable Li-ion Battery**  
**Can be used for 36 hours continuously**  
**LED Switch Function**  
**2 Voltage Displays**  
**(Low Battery / Fully Charged)**

PROFESSIONAL

Do you still use flashlight to read the digits during night time?  
Then our LED series measuring wheels are perfect for you!  
With the rechargeable lithium ion battery, you don't need to waste any dry cells. The centerline wheel is to increase balance and more accurate measurement. With the certificates CE, RoHS and SGS, you can rest assured that we have the highest quality products.



LED



BWM08



BWM08N



Single color



Dual color



## BWM12 / BWM12N

colour:



# 12

**Measuring Capacity: 9999.9m or 9999.9ft**

**Minimum: 1 inch or 10cm**

**wheel Diameter: 12" (320mm)**

**Radius: 6" (160mm)**

**Expanded Size: 38-1/2" (980mm)**

**Storage Size: 20" (510mm)**

**BWM12 Weight: 1650g**

**BWM12N Weight: 1590g**

PROFESSIONAL

These folding Pro-Series Measuring Wheels have a large wheel that allows for greater accuracy. They can be used on horizontal, vertical & curved surfaces & fold down to a storage size of 20"/510mm & also extend out to 38-1/2"/980mm when in use. The BWM12 also features a pistol grip with a brake and re-set switch on the handle, plus a fold down kickstand & has a measuring capacity of right up to 9999.9m or 9999.9ft



BWM12



BWM12N



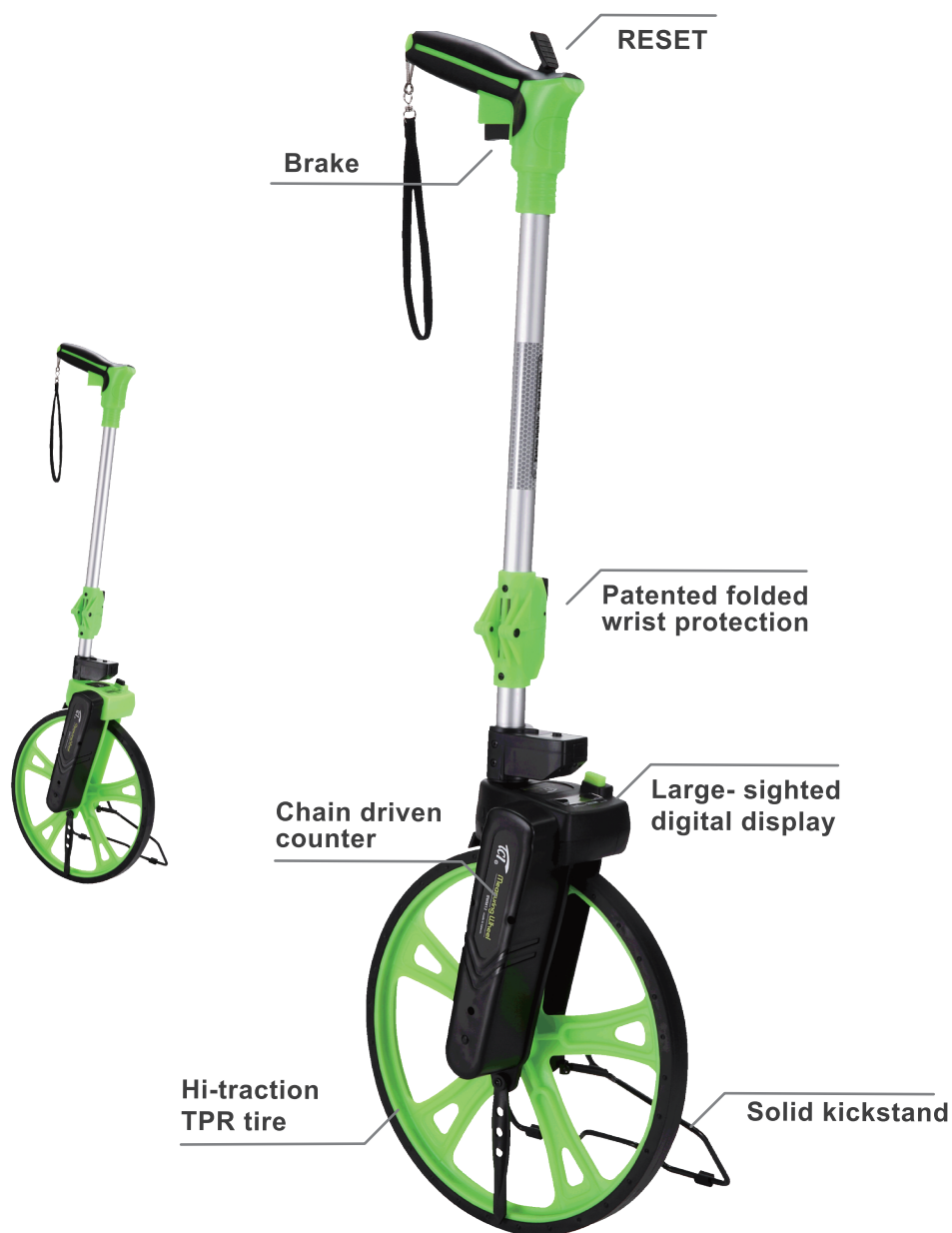
Single color



Dual color



# LED



**Working Voltage: 2.5V**  
**Rechargeable Li-ion Battery**  
**Can be used for 36 hours continuously**  
**LED Switch Function**  
**2 Voltage Displays**  
**(Low Battery / Fully Charged)**

PROFESSIONAL

Do you still use flashlight to read the digits during night time?  
 Then our LED series measuring wheels are perfect for you!  
 With the rechargeable lithium ion battery, you don't need to  
 waste any dry cells. The centerline wheel is to increase  
 balance and more accurate measurement. With the  
 certificates CE, RoHS and SGS, you can rest assured that we  
 have the highest quality products.



## BJWM04/BJWM04D

colour:



BJWM04



BJWM04D

# 04

SIMPLIFIED

Minimum: 1 inch or 1 cm  
Expanded Size: 40" (1040 mm)  
Storage Size: 20" (520 mm)

BJWM04 Weight: 450g

BJWM04D Weight: 545g

The BJWM04/04D measuring wheels make it easy to measure distance up to 1km in a variety of work environments. The telescoping handle reduces length to 52cm and allows you to carry anywhere without effort. The BJWM04/04D give accurate measurements on any smooth, hard surface from interior floors to sidewalks. Because of its small size, it is ideal for real estate and homeowners.



BJWM04



BJWM04D

## BJWM08/BJWM08F

colour:



# 08

### BJWM08

Minimum: 1 inch or 10cm

Expanded Size: 43" (1100 mm)

Storage Size: 23" (585mm)

BJWM08 Weight: 766g

### BJWM08F

Minimum: 1 inch or 10cm

Expanded Size: 39" (1010 mm)

Storage Size: 19" (490 mm)

BJWM08F Weight: 962g

Manufactured from plastic and aluminum, this lightweight measuring wheel can measure from 0 to 10km. Although it is light weighted, but with the 8" wheel, it is almost perfect for any outdoor use. You can choose either the telescoping handle or the 3-section folding handle.

SIMPLIFIED



BJWM08



BJWM08F



BJWM12

colour:   



# 12

SIMPLIFIED

Minimum:1 inch or 10cm  
Expanded Size:39"(1000 mm)  
Storage Size:20"(520 mm)  
BJWM12 Weight:1350g

This measuring wheel makes it easy to measure distance up to 10km in a variety of work environments. It is quite portable with 12" wheel and a handle that is 100cm , but is collapsible to 52cm. With the large-sighted digital display, it allows you to read clearly from distance.

## BOWM-3FS/BOWM-4F



**BOWM-3FS**



**BOWM-4F**

These Metal Professional Wheels are durable to stand up to hard field conditions. Our counters have self-made innovative designs, we assure you the highest quality product, especially when we've come out with a large-sighted counter, which makes it easy to read.

OEM cooperations are most welcome.

PROFESSIONAL

No. 15, Lane 71, Sec. 5, Hankou Rd. Beitun Dist.,  
Taichung City 40650 Taiwan

Mailing : P.O.BOX 156

TEL : +886-4-2238-8823

FAX : +886-4-2238-8914

E-MAIL: [counter.tci1281@msa.hinet.net](mailto:counter.tci1281@msa.hinet.net)